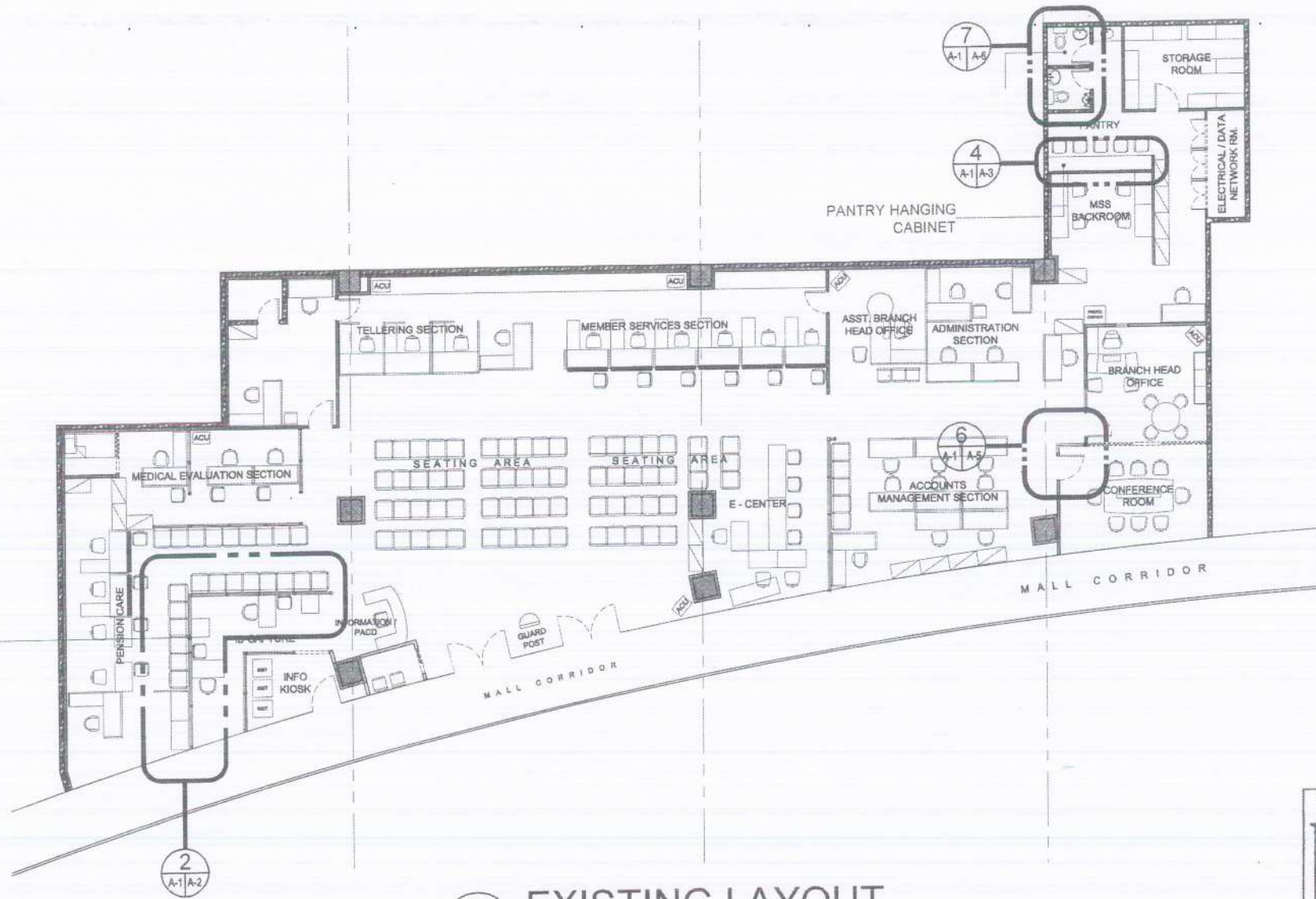



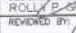


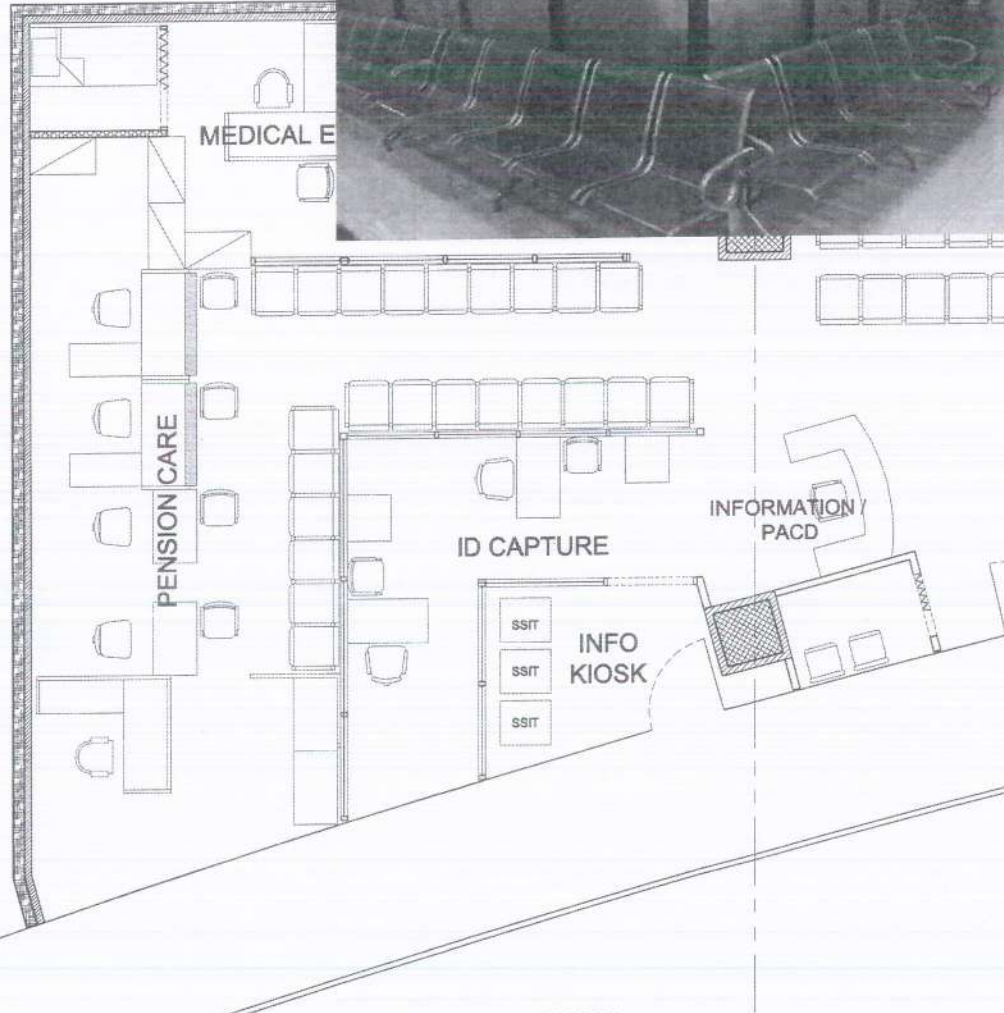
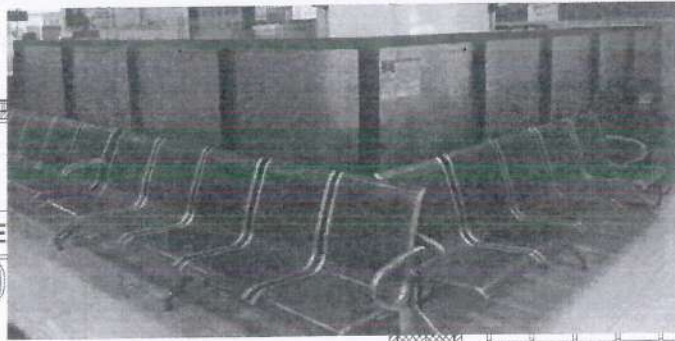
FOR DEMOLITION OF ZOCALO WALL



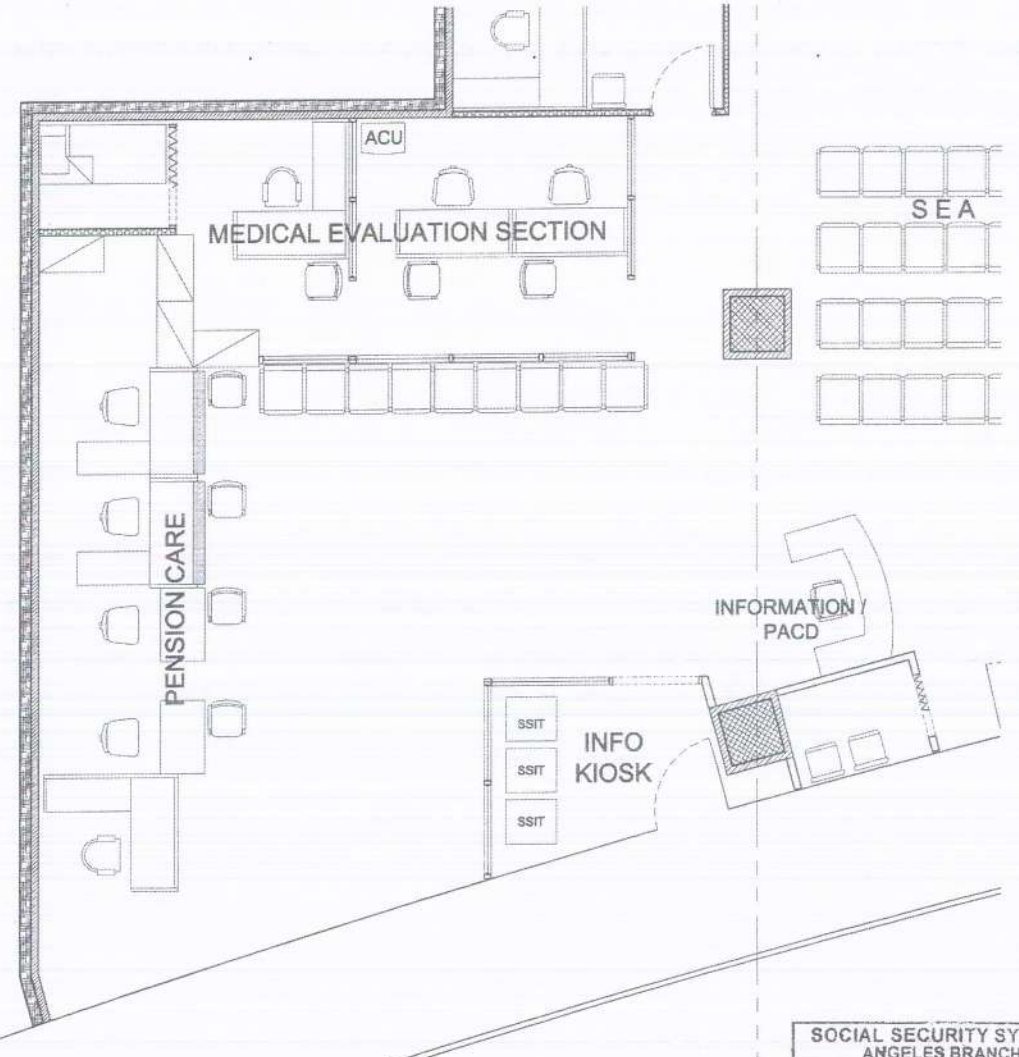
**1** EXISTING LAYOUT  
 A-1/A-1 SCALE 1:200 MTS

SOCIAL SECURITY SYSTEM  
 ANGELES BRANCH  
**RECEIVED**  
 MAR 14 2024  
 By: Velvitie M. Martinez  
 Time: \_\_\_\_\_

 <b>SOCIAL SECURITY SYSTEM</b> LUZON CENTRAL 2 DIVISION	PROJECT TITLE: <b>DISMANTLING/REMOVAL OF PARTITIONS &amp; VARIOUS IMPROVEMENTS OF SSS ANGELES BRANCH</b>	RECOMMENDING APPROVAL:  <b>NORMITA M. CRUZ</b> BRANCH HEAD II	APPROVED BY:  <b>GLORIA CORAZON M. ANDRADA</b> VICE PRESIDENT	CIVIL AND ARCHITECTURAL DRAWN BY: JMP-RPS DESIGNED BY: ROLLY P. SANCHEZ, Bldg. Administrator REVIEWED BY:  CHECKED BY:	SHEET CONTENT: EXISTING LAYOUT	ALL DRAWINGS MUST BE VERIFIED ON SITE BY THE CONTRACTOR. ALL DISCREPANCIES ARE TO IMMEDIATELY REPORTED TO THE ARCHITECT AND PROJECT MANAGER. CONTRACTORS ARE TO PREPARE AND SUBMIT SHOP DRAWINGS TO THE ARCHITECT PRIOR TO COMMENCEMENT OF WORKS.	SHEET NO. <b>A-1</b> 1 7
	LOCATION: Level 3, Marquee Mall, Angeles City						



**2**  
A-1 | A-2  
**GLASS LOE PARTITION  
EXISTING PLAN**  
SCALE 1:100 MTS



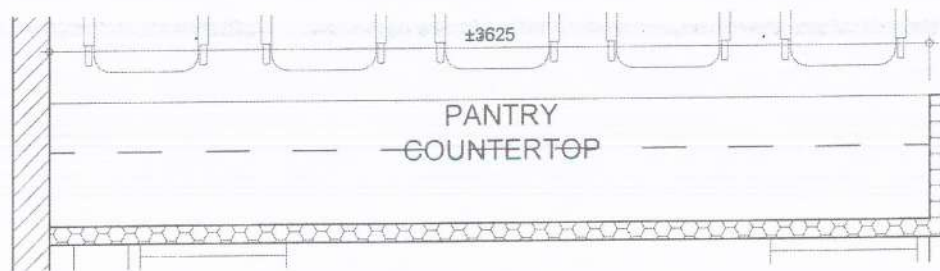
**3**  
A-1 | A-2  
**PROPOSED PLAN**  
SCALE 1:100 MTS

SOCIAL SECURITY SYSTEM  
ANGELES BRANCH  
**RECEIVED**  
MAR 14 2024  
By: Velvitie M. Martinez  
Time:

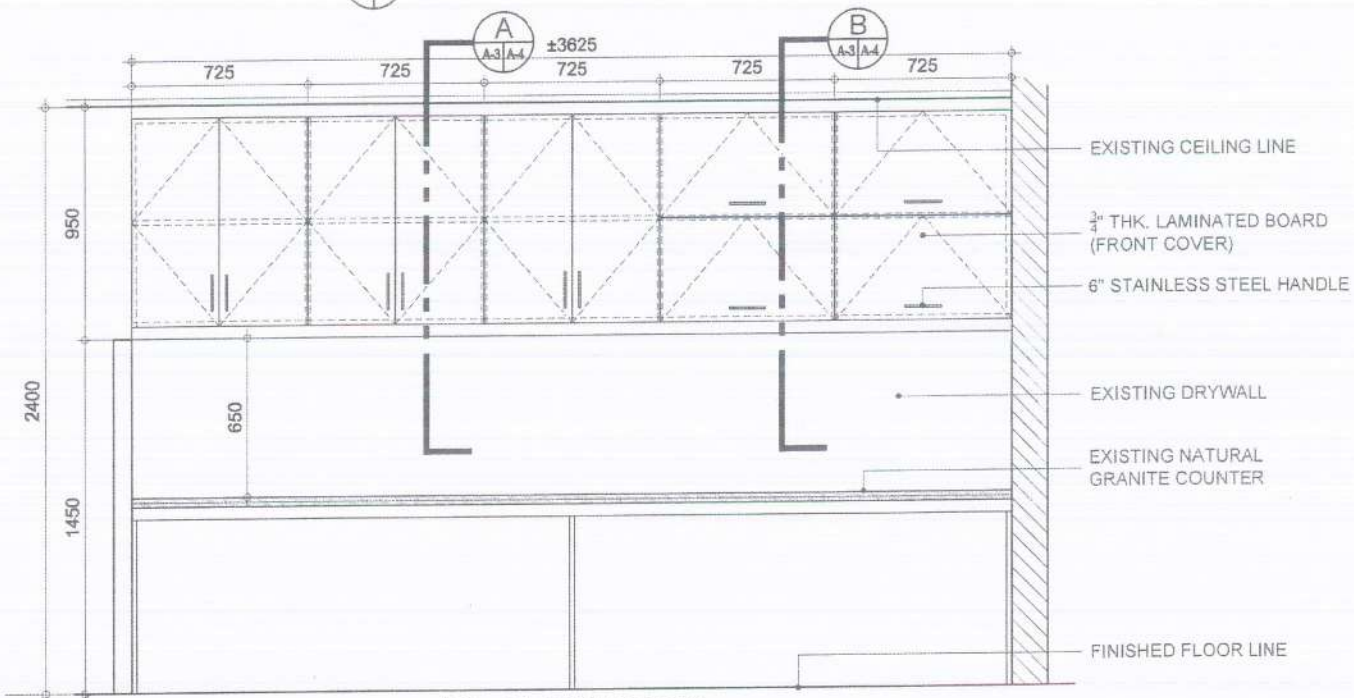
<p><b>SOCIAL SECURITY SYSTEM</b> LUZON CENTRAL 2 DIVISION</p>	<p>PROJECT TITLE: <b>DISMANTLING/REMOVAL OF PARTITIONS &amp; VARIOUS IMPROVEMENTS OF SSS ANGELES BRANCH</b></p>	<p>RECOMMENDING APPROVAL:  <b>NORMITA M. CRUZ</b> BRANCH HEAD II</p>	<p>APPROVED BY:  <b>GLORIA CORAZON M. ANDRADA</b> VICE PRESIDENT</p>	<p>CIVIL AND ARCHITECTURAL DRAWN BY: JMP-RPG DESIGNED BY: ROLLY P. SOLVARES, Bldg. Administrator REVIEWED BY: CHECKED BY:</p>	<p>SHEET CONTENT: BLOW-UP PLAN EXISTING PLAN PROPOSED PLAN</p>	<p>ALL DIMENSIONS MUST BE VERIFIED ON SITE BY THE CONTRACTOR. ALL DISCREPANCIES ARE TO IMMEDIATELY REPORTED TO THE ARCHITECT AND PROJECT MANAGERS. CONTRACTORS ARE TO PREPARE AND SUBMIT SHOP DRAWINGS TO THE ARCHITECT PRIOR TO COMMENCEMENT OF WORKS.</p>	<p>SHEET NO. <b>A-2</b> 2   7</p>
	<p>LOCATION: Level 3, Marquee Mall, Angeles City</p>						



**A**  
A-3 | A-3 SCALE NTS  
ACTUAL PICTURE  
**PANTRY**



**B**  
A-3 | A-3 SCALE 1:30 MTS  
**PANTRY PLAN**



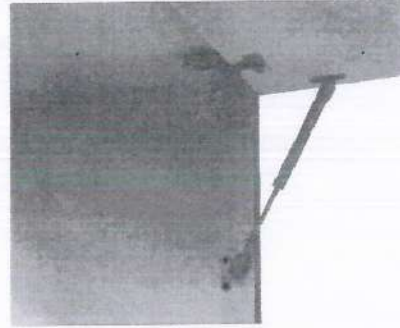
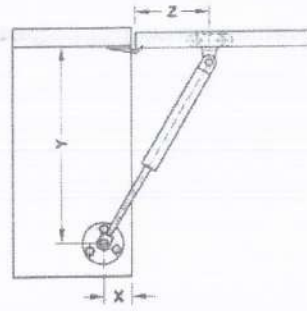
**C**  
A-3 | A-3 SCALE 1:30 MTS  
**ELEVATION**

**4**  
A-1 | A-3 SCALE 1:30 MTS  
**PANTRY HANGING CABINET**

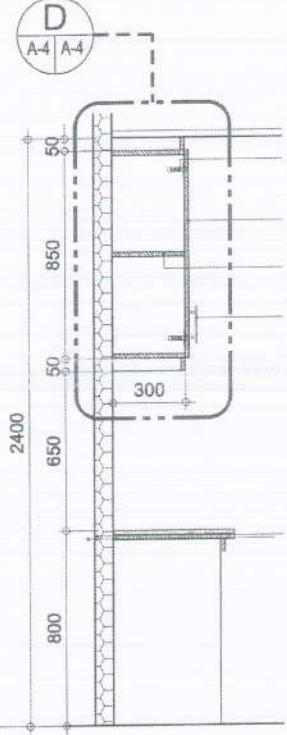
SOCIAL SECURITY SYSTEM  
ANGELES BRANCH  
**RECEIVED**  
MAR 14 2024  
By: Velvitie M. Martinez  
Time:

<p><b>SOCIAL SECURITY SYSTEM</b></p> <p>LUZON CENTRAL 2 DIVISION</p>	<p>PROJECT TITLE:</p> <p><b>DISMANTLING/REMOVAL OF PARTITIONS &amp; VARIOUS IMPROVEMENTS OF SSS ANGELES BRANCH</b></p>	<p>RECOMMENDING APPROVAL:</p> <p><i>[Signature]</i> <b>NORMITA M. CRUZ</b> BRANCH HEAD II</p>	<p>APPROVED BY:</p> <p><i>[Signature]</i> <b>GLORIA CORAZON M. ANDRADA</b> VICE PRESIDENT</p>	<p>CIVIL AND ARCHITECTURAL</p> <p>DRAWN BY: JIMPARPIS DESIGNED BY: ROLLY F. BONZALES - Reg. Architect REVIEWED BY: <i>[Signature]</i> CHECKED BY:</p>	<p>SHEET CONTENT:</p> <p>PANTRY HANGING CABINET ACTUAL PICTURE PANTRY PLAN ELEVATION</p>	<p>ALL ORDINANCES MUST BE VERIFIED ON SITE BY THE CONTRACTOR. ALL DISCREPANCIES ARE TO IMMEDIATELY REPORT TO THE ARCHITECT AND PROJECT MANAGERS. CONTRACTORS ARE TO PREPARE AND SUBMIT SHOP DRAWINGS TO THE ARCHITECT PRIOR TO COMMENCEMENT OF WORKS.</p>	<p>SHEET NO.</p> <p><b>A-3</b></p> <p>3   7</p>
	<p>LOCATION: Level 3, Marquee Mall, Angeles City</p>						

SOCIAL SECURITY SYSTEM  
ANGELES BRANCH  
**RECEIVED**  
MAR 14 2024  
By: Velvitie M. Martinez  
Time:

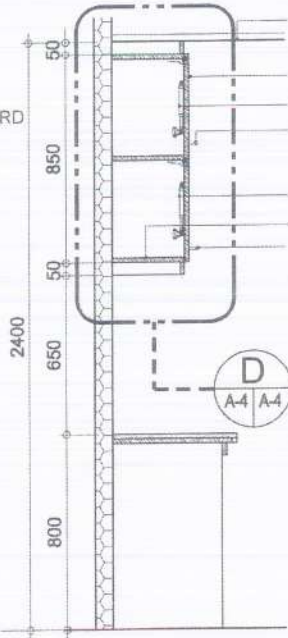


**C PNEUMATIC LID STAY DETAILS**  
A-4 | A-4 SCALE NTS



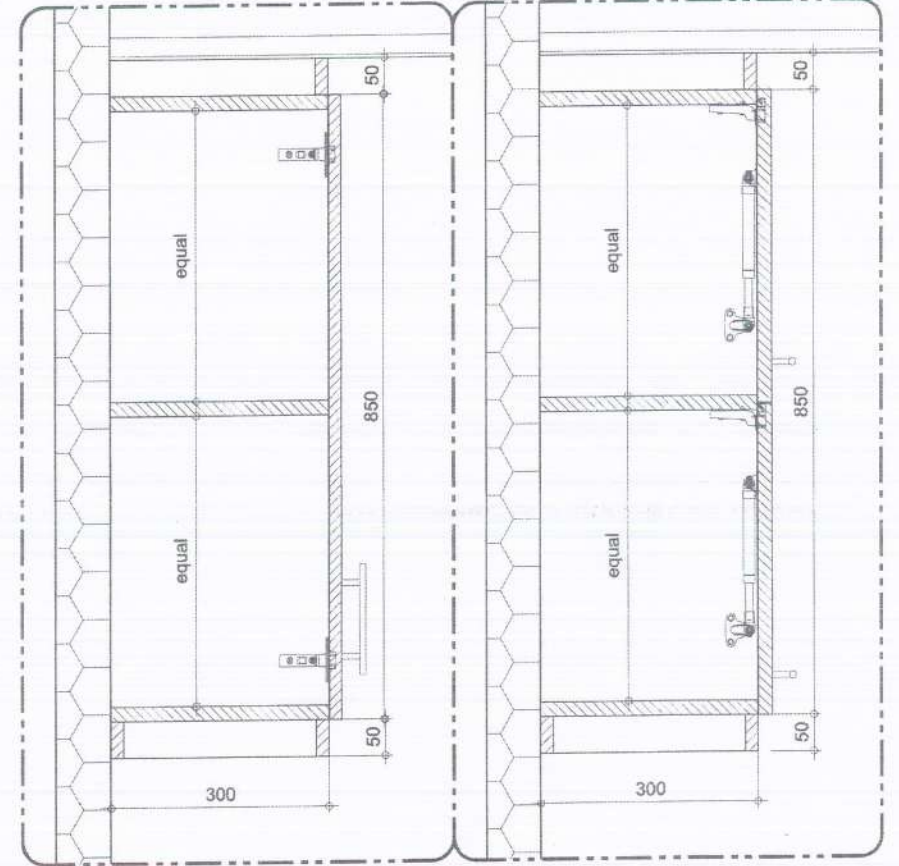
**A SECTION A**  
A-3 | A-4 SCALE 1:30 MTS

- CONCEALED HINGE W/ AUTOMATIC CLOSING SPRING
- 1/2" THK. LAMINATED BOARD (FRONT COVER)
- 1/2" THK. PLYWOOD (DIVIDER)
- 6" STAINLESS STEEL HANDLE



**B SECTION B**  
A-3 | A-3 SCALE 1:30 MTS

- EXISTING CEILING
- LAMINATED BOARD (VERIFY DESIGN)
- PNEUMATIC LID STAY
- 6" STAINLESS STEEL HANDLE
- PNEUMATIC LID STAY
- 3/4" THK. MARINE PLYWOOD
- 6" STAINLESS STEEL HANDLE

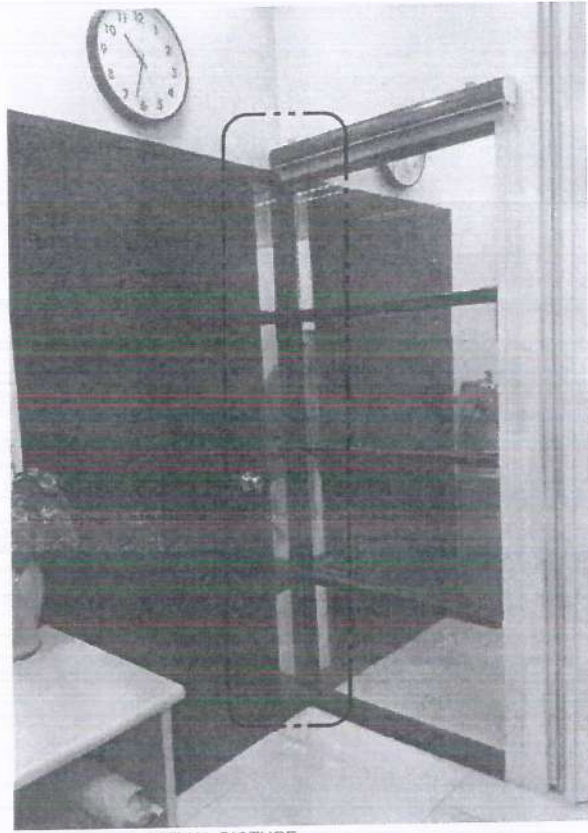


**D SECTION D**  
A-4 | A-4 SCALE 1:10 MTS

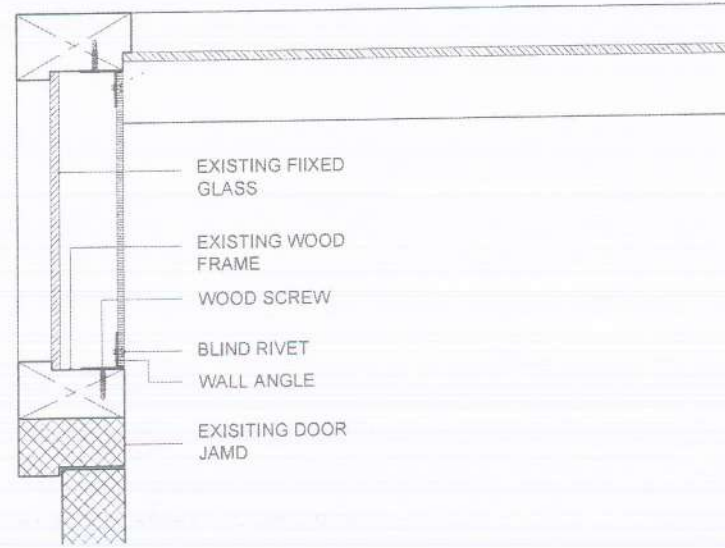
**5 PANTRY HANGING CABINET**  
A-1 | A-4 SCALE NTS

<p><b>SOCIAL SECURITY SYSTEM</b> LUZON CENTRAL 2 DIVISION</p>	<p>PROJECT TITLE: <b>DISMANTLING/REMOVAL OF PARTITIONS &amp; VARIOUS IMPROVEMENTS OF SSS ANGELES BRANCH</b></p>	<p>RECOMMENDING APPROVAL:  <b>NORMITA M. CRUZ</b> BRANCH HEAD II</p>	<p>APPROVED BY:  <b>GLORIA CORAZON M. ANDRADA</b> VICE PRESIDENT</p>	<p>CIVIL AND ARCHITECTURAL DRAWN BY: ROLLY P. GONZALES - Bldg. Administrator DESIGNED BY: ROLLY P. GONZALES - Bldg. Administrator REVIEWED BY: CHECKED BY:</p>	<p>SHEET CONTENT: PANTRY HANGING CABINET SECTION A SECTION B PNEUMATIC LID STAY DETAILS SECTION D</p>	<p>ALL DRAWINGS MUST BE VERIFIED ON SITE BY THE CONTRACTOR. ALL DISCREPANCIES ARE TO IMMEDIATELY REPORTED TO THE PROJECT AND PROJECT MANAGERS. CONTRACTORS ARE TO PREPARE AND SUBMIT SHOP DRAWINGS TO THE ARCHITECT PRIOR TO COMMENCEMENT OF WORKS.</p>	<p>SHEET NO. <b>A-4</b> 4   7</p>
	<p>LOCATION: Level 3, Marquee Mall, Angeles City</p>						

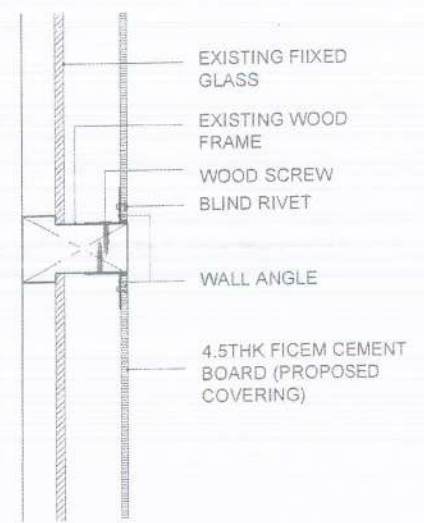
SOCIAL SECURITY SYSTEM  
ANGELES BRANCH  
**RECEIVED**  
MAR 14 2024  
By: Velvitie M. Martinez  
Time: \_\_\_\_\_



**A**  
A-5 | A-5 SCALE NTS  
ACTUAL PICTURE  
**CONFERENCE ROOM**



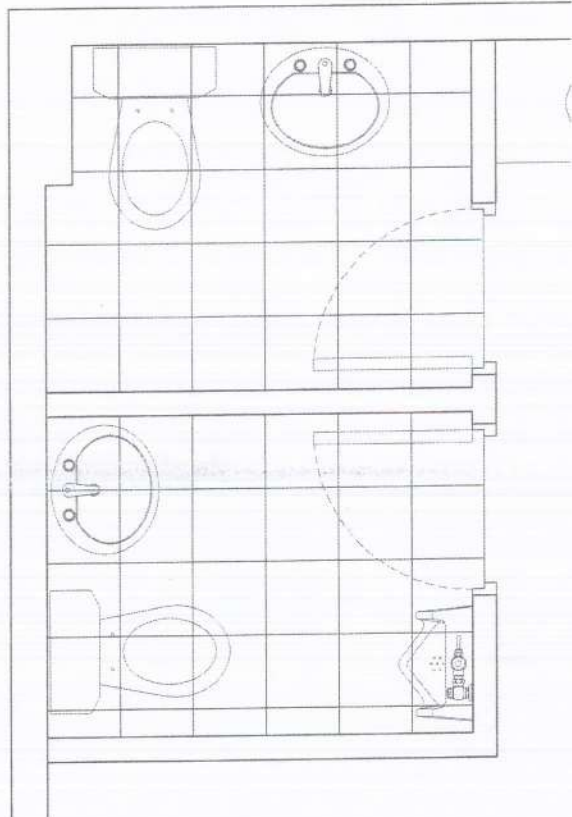
**A**  
A-5 | A-5 SCALE NTS  
**PLAN**



**A**  
A-5 | A-5 SCALE NTS  
**SECTION**

**6**  
A-1 | A-5 SCALE NTS  
**CONFERENCE ROOM  
COVERING OF FIXED GLASS**

<p><b>SOCIAL SECURITY SYSTEM</b></p> <p>LUZON CENTRAL 2 DIVISION</p>	<p>PROJECT TITLE: <b>DISMANTLING/REMOVAL OF PARTITIONS &amp; VARIOUS IMPROVEMENTS OF SSS ANGELES BRANCH</b></p>	<p>RECOMMENDING APPROVAL:  <b>NORMITA M. CRUZ</b> BRANCH HEAD II</p>	<p>APPROVED BY:  <b>GLORIA CORAZON M. ANDRADA</b> VICE PRESIDENT</p>	<p>CIVIL AND ARCHITECTURAL DRAWN BY:  DESIGNED BY:  REVIEWED BY:  CHECKED BY: _____</p>	<p>SHEET CONTENT: COVERING OF FIXED GLASS ACTUAL PICTURE PLAN SECTION</p>	<p>ALL DRAWINGS MUST BE VERIFIED ON SITE BY THE CONTRACTOR. ALL DISCREPANCIES ARE TO IMMEDIATELY REPORT TO THE ARCHITECT AND PROJECT MANAGERS. CONTRACTORS ARE TO PREPARE AND SUBMIT SHOP DRAWINGS TO THE ARCHITECT PRIOR TO COMMENCEMENT OF WORKS.</p>	<p>SHEET NO. <b>A-5</b> 5   7</p>
	<p>LOCATION: Level 3, Marquee Mall, Angeles City</p>						



**A** COMFORT ROOMS TILE LAYOUT  
A-6 | A-6 SCALE 1:30 MTS



**B** ACTUAL PICTURE MALE COMFORT ROOM  
A-6 | A-6 SCALE NTS



**C** ACTUAL PICTURE FEMALE COMFORT ROOM  
A-6 | A-6 SCALE NTS

**7** RETILING OF COMFORT ROOMS  
A-1 | A-6 NOT TO SCALE

SOCIAL SECURITY SYSTEM  
ANGELES BRANCH  
**RECEIVED**  
MAR 14 2024  
By: Velvitie M. Martinez  
Time: \_\_\_\_\_



**SOCIAL SECURITY SYSTEM**

LUZON CENTRAL 2 DIVISION

PROJECT TITLE:

DISMANTLING/REMOVAL OF PARTITIONS & VARIOUS IMPROVEMENTS OF SSS ANGELES BRANCH

LOCATION: Level 3, Marquee Mall, Angeles City

RECOMMENDING APPROVAL:

*Norwita M. Cruz*  
NORWITA M. CRUZ  
BRANCH HEAD II

APPROVED BY:

*Gloria Corazon M. Andrada*  
GLORIA CORAZON M. ANDRADA  
VICE PRESIDENT

CIVIL AND ARCHITECTURAL

DRAWN BY: ROLLY P. SOMBALES, Brig. Administrator  
DESIGNED BY: ROLLY P. SOMBALES, Brig. Administrator  
REVIEWED BY: \_\_\_\_\_  
CHECKED BY: \_\_\_\_\_

SHEET CONTENT:

RETILING OF COMFORT ROOMS  
COMFORT ROOM TILE LAYOUT  
ACTUAL PICTURE MALE CR  
ACTUAL PICTURE FEMALE CR

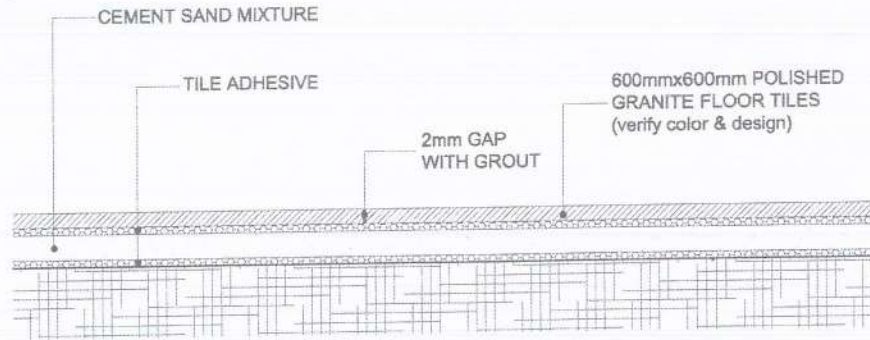
ALL DRAWINGS MUST BE VERIFIED ON SITE BY THE CONTRACTOR. ALL DISCREPANCIES ARE TO IMMEDIATELY REPORTED TO THE ARCHITECT AND PROJECT MANAGERS. CONTRACTORS ARE TO PREPARE AND SUBMIT SHOP DRAWINGS TO THE ARCHITECT PRIOR TO COMMENCEMENT OF WORK.

SHEET NO.

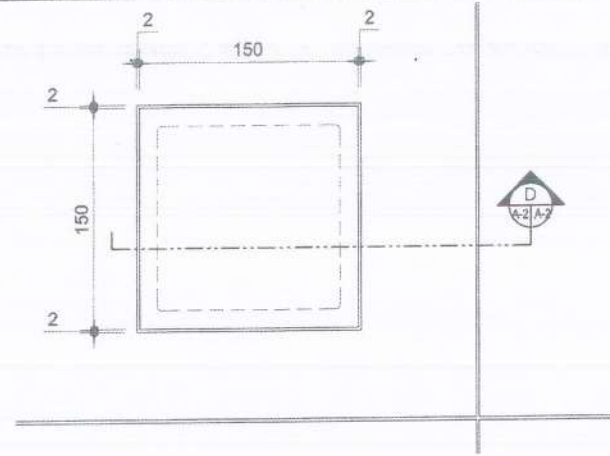
A-6

6 | 7

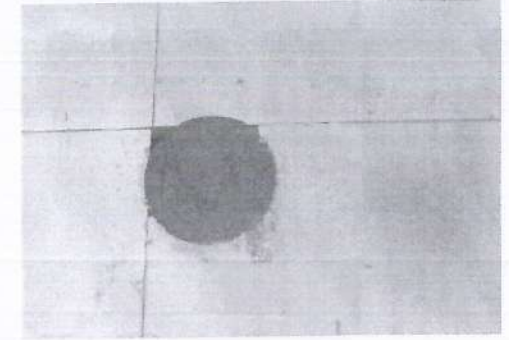
SOCIAL SECURITY SYSTEM  
ANGELES BRANCH  
**RECEIVED**  
MAR 14 2024  
By: Velvitie M. Martinez  
Time:



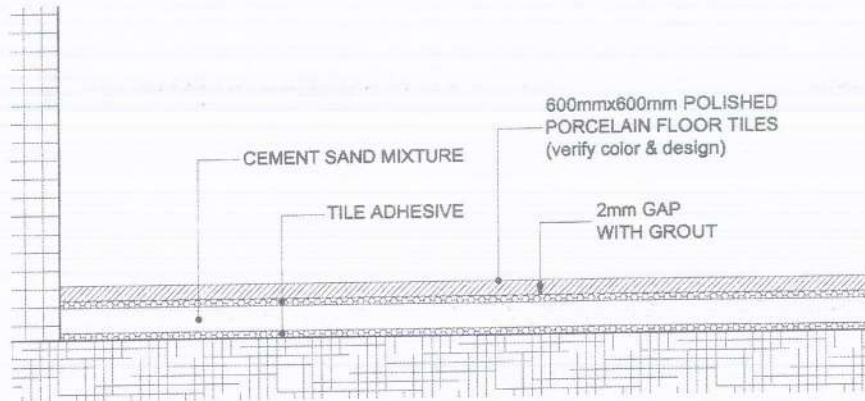
**A FLOOR SECTION DETAIL A**  
A-7/A-7 NOT TO SCALE



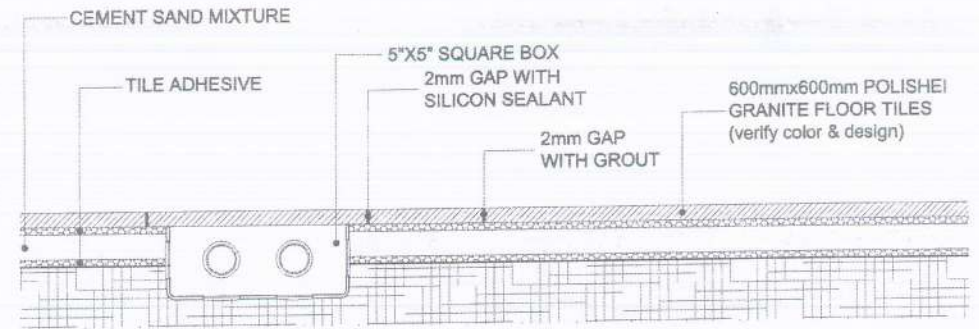
**C UTILITY BOX COVER BLOW-UP PLAN**  
A-7/A-7 NOT TO SCALE



**D ACTUAL PICTURE FLOOR OUTLET**  
A-7/A-7 NOT TO SCALE



**B FLOOR SECTION DETAIL B**  
A-7/A-7 NOT TO SCALE



**E FLOOR COVER SECTION DETAIL**  
A-7/A-7 NOT TO SCALE

**8 FLOOR TILES DETAILS**  
A-7/A-7 SCALE NTS

**9 CONVENIENCE, NETWORK/DATA & VOICE FLOOR COVER DETAILS**  
A-7/A-7 SCALE NTS



**SOCIAL SECURITY SYSTEM**

LUZON CENTRAL 2 DIVISION

PROJECT TITLE:  
**DISMANTLING/REMOVAL OF PARTITIONS & VARIOUS IMPROVEMENTS OF SSS ANGELES BRANCH**

LOCATION: Level 3, Marquee Mall, Angeles City

RECOMMENDING APPROVAL:

*Normita M. Cruz*  
**NORMITA M. CRUZ**  
BRANCH HEAD II

APPROVED BY:

*Gloria Corazon M. Andrada*  
**GLORIA CORAZON M. ANDRADA**  
VICE PRESIDENT

CIVIL AND ARCHITECTURAL

DRAWN BY: *Rolly P. Gonzales* - Bldg. Administrator  
DESIGNED BY: *Rolly P. Gonzales* - Bldg. Administrator  
REVIEWED BY: *[Signature]*  
CHECKED BY: *[Signature]*

SHEET CONTENT:

FLOOR TILES DETAILS  
CONVENIENCE, NETWORK/DATA & VOICE FLOOR COVER DETAILS

ALL DRAWINGS MUST BE VERIFIED ON SITE BY THE CONTRACTOR.  
ALL DISCREPANCIES ARE TO IMMEDIATELY REPORT TO THE ARCHITECT AND PROJECT MANAGER.  
CONTRACTORS ARE TO INQUIRE AND QUANTIFY SHOP DRAWINGS TO THE ARCHITECT PRIOR TO COMMENCEMENT OF WORKS.

SHEET NO.

A-7

7 7